

# Therapeutic Compliance

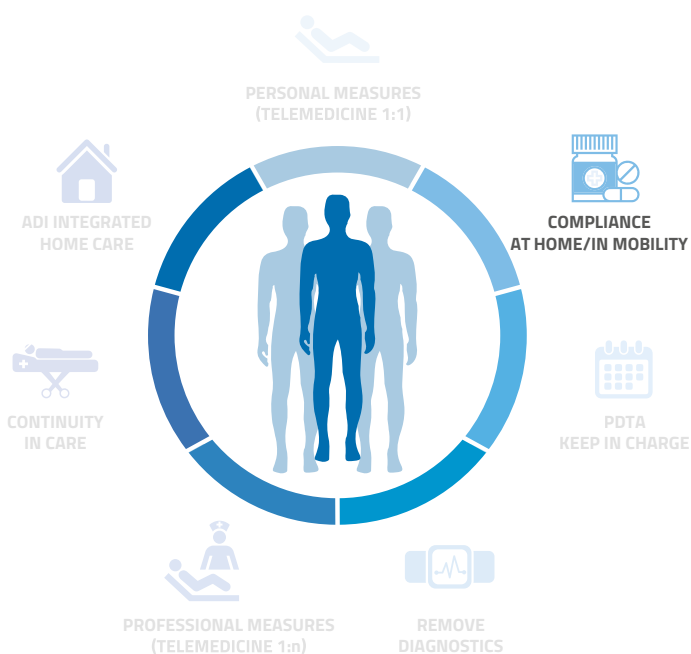


## What it is

Therapeutic compliance is one of the main problems of chronic and post-acute patients.

Adherence to therapy is one of the fundamental pillars for mortality prevention and for health system reduction of expenditure (*World Health Organization*).

One chronic in 5 forgets to take drugs and one in seven takes them in wrong dosage (*Cittadinanza Attiva Onlus Italy*).



## This model uses

- Therapeutic Compliance

## Target patients

- Chronic patients
- Post-acute patients
- Frail patients

## Target clients

- B2B2C patients

## Model description

The Hardware and Software solution made available by H&S helps the drug intake process and accurately assesses therapeutic compliance. The solution applies in particular to elderly chronic patients but can also be applied to post-acute and frail elderly patients in general.





## Use Case

- 
**Parma Hospital - Emilia Romagna (Italy)**  
 European research project  
 focused on Therapeutic Compliance

## The Project

The idea is to provide a Pill Dispenser that organizes therapy at times of drug intake and that warns the patient visually and audibly that a blister must be taken. It detects the precise removal of the blister and the assumption of the medications associated with it. It provides a precise measure of compliance and the patient's residual autonomy with respect to the use of medications. The solution actively involves the caregiver in the positive drug intake circle.



Start Up



In Progress

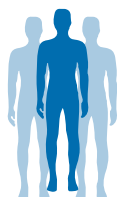


Validate



### Recipient

The service is intended for users who purchase the service for their family or third parties who intend to offer a service to end users



### Target patients

Chronic, frail and post-acute patients at home



### What is monitored

Therapeutic compliance



## Role/Technologies

H&S provides the client with a complete and CE-certified solution for therapy intake, guaranteeing a precise compliance assessment. In addition to the hardware and software technology platform, H&S offers Help Desk services, 24-hour support and technical monitoring of the platform and home devices aimed at ensuring the effective and perceived quality of the end-to-end service for the patient and his/her caregiver.





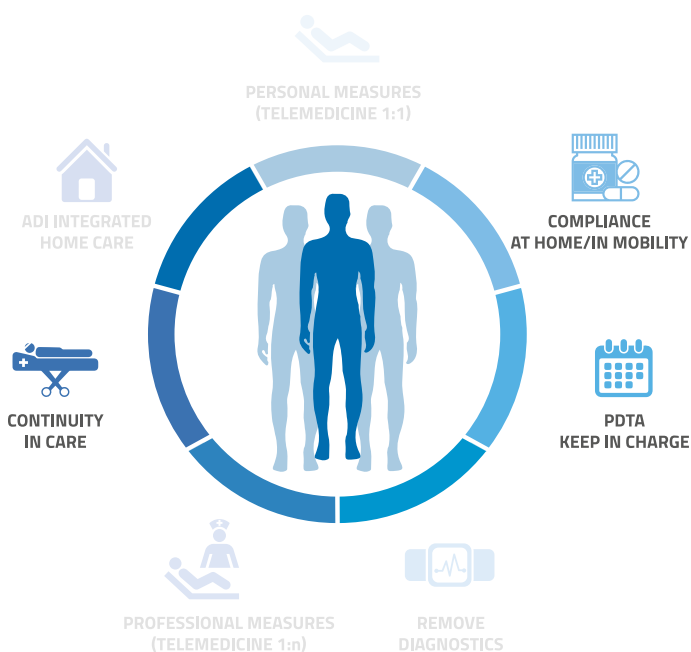
# Hospital-territory continuity in care



## What it is

Continuity of care consists in extending goals of care over time, without interruption through medical interventions at various levels and healthcare delivery domains.

It is a process thanks to which, after singling out the patient's needs, continuing healthcare is provided from a care level to another, be it a home, hospital or another facility setting.



## This model uses

- 1:1 telemedicine
- 1:N telemedicine
- Therapeutic Compliance

## Target patients

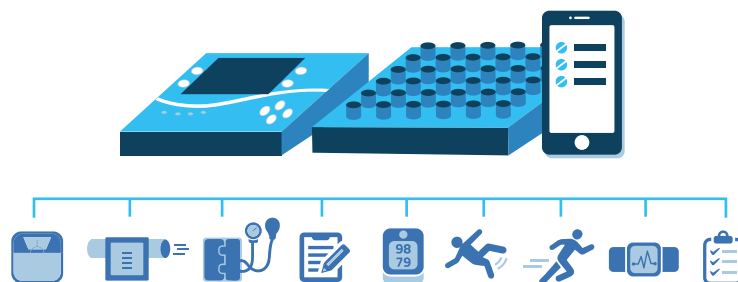
- Post-acute patients
- Post-surgery patients
- Severe patients

## Target clients

- Hospitals
- Private clinics

## Model description

The SAAS software solution and the enabling hardware technologies available cover three essential aspects: Patient Monitoring, Therapeutic Compliance and Patient Information. The solution applies to post-acute and/or severe patients in the hospital's charge and managed at home.





## Use Case

- ✓ ASS 1 Trieste - Friuli Venezia Giulia
- ✓ Villa Maria Group
- ✓ Milan Multimedica Group
- ✓ **Fastweb for Bari Oncological Hospital**
- ✓ Xanwu Hospital Beijing - Cina

## The Project

As part of the 5G experimentation, the Bari Oncological Hospital and Fastweb, as a mobile operator, have experimented 5G technology in serious cancer patients healthcare at their homes and a connected mobile laboratory. At the rate of 3 gigabits per second, we have integrated laboratory machine information, 4K videoconferencing and autonomous measures to facilitate patients and send them to the hospital if and only if necessary. Experimentation has now extended from a hospital setting to the patient's home and to mobility.



Start Up



In Progress

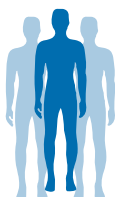


Validate



## Recipient

John Paul II Scientific Institute for Cancer Research, Hospitalization and Health Care (IRCCS)



## Target patients

Severe cancer patients being treated at the John Paul II Cancer Institute



## What is monitored

Vital parameters and advanced laboratory testings for severe cancer patients



## Role/Technologies

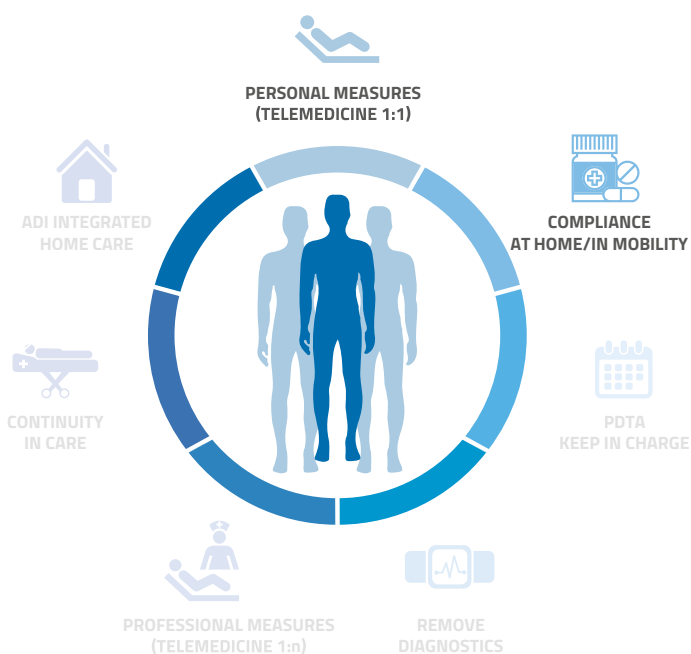
H&S provides the client with a complete and certified medical class 2 A solution for the complete need and service management supplied to the Bari Oncological Hospital patients. In addition to the hardware and software technology platform, H&S offers a series of production and logistics services, such as Help Desk, 24-hour support and platform technical monitoring, aimed at ensuring the actual and perceived quality of end-to-end service for patients and professionals.

# Value-added services for Health Insurances



## What it is

Health insurances offer various services to their clients, ranging from telemonitoring to patient healthcare. H&S offers solutions and services for healthcare insurances, focused on 360-degree client management, providing an enabling and secure infrastructure to manage all patient-centred data, leaving clinical and medical decisions to the insurance company.



## This model uses

- 1:1 (N) telemedicine
- Therapeutic Compliance

## Target patients

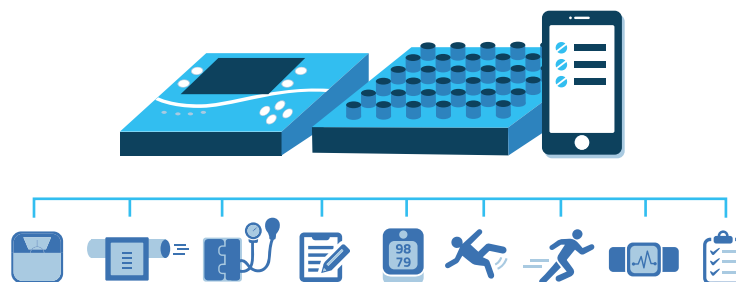
- Over-55 patients
- Chronic patients
- Post-acute patients

## Target clients

- Insurance companies including a healthcare branch

## Model description

The SAAS software solution and the enabling hardware technologies available cover three essential aspects: Patient Monitoring, Compliance and Patient Information. The solution applies to either home patients and mobile patients still in working age.





## Use Case

- Unisalute - Unipol-Sai Group**
- Generali

## The Project

**Unisalute** is a health insurance company that is part of the Unipol Sai group, which offers added-value services to its policyholders to take care of them at different levels of severity and management. Services include chronicity management, integrated home care services, telemonitoring and chronicity prevention.



Start Up



In Progress

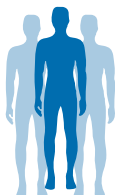


Validate



### Recipient

Unisalute, the first health insurance in Italy concerning the number of managed clients



### Target patients

Policyholders over 55 and IHCS patients to be monitored and taken into charge



### What is monitored

Vital parameters, patient survey, IHCS access feedback, social health patients



## Role/Technologies

H&S provides the client with a complete and certified medical class 2 A solution to manage in the round all needs and services supplied to Unisalute policyholders. In addition to the hardware and software technology platform, H&S offers a series of logistic production and services, such as Help Desk, 24-hour support and platform technical monitoring, aimed at ensuring the actual and perceived quality of end-to-end service for patients and professionals.

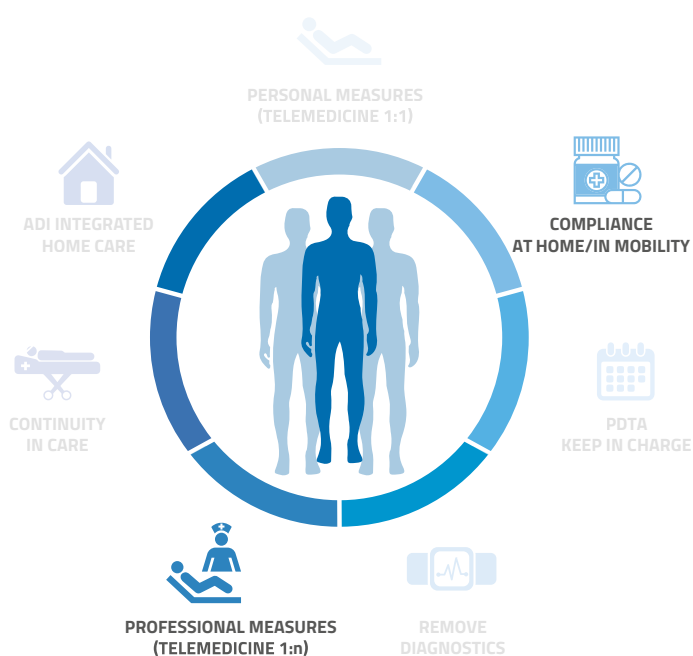


# Point of Care in pharmacy



## What it is

The pharmacy as a "healthcare" point of proximity to the patient can be seen as a point of pharmacological advice and drug delivery, but also as a possible place for simple and/or complex clinical examinations. In this scenario, the pharmacy can serve patients who privately want to take examinations comfortably or as a point of service for examinations prescribed or envisaged in Individual Healthcare Plans or in health insurance service protocols.



## This model uses

- 1: N telemedicine
- Therapeutic compliance

## Target patients

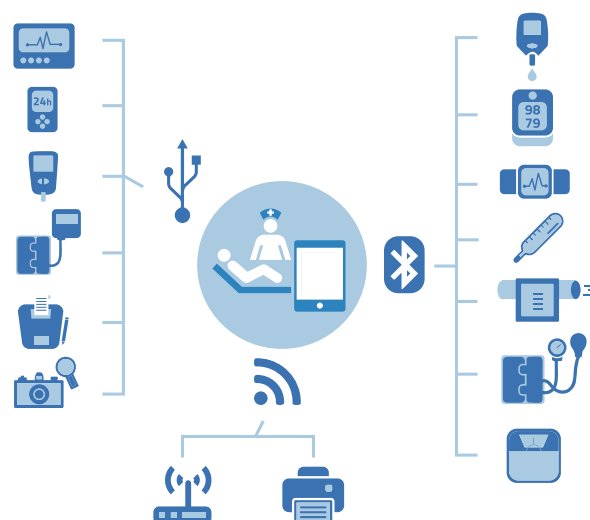
- Clients over 65
- Chronic clients

## Target clients

- Pharmacies

## Model description

The SAAS software solution and the enabling hardware technologies made available to the pharmacy allow to carry out complex examinations and to report them within the same platform.





## Use Case

**Chorafarma - (Sapio)**

## The Project

Simple and/or complex exam management directly at the pharmacy with remote reporting and electronic result delivery. The solution foresees setting up POCs (Points of Care in pharmacies with autonomous connectivity and the possibility of carrying out different examinations types.



Start Up



In Progress

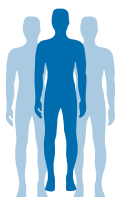


Validate



### Recipient

Pharmacies participating over Italy and production companies where a POC (Point of Care) has been installed to the clients and workers' benefit for personalized pathology-based and age-based check-ups.



### Target patients

Over-65 clients and chronic clients



### What is monitored

Simple and/or complex testings (ECG12, Holter ECG, pressure Holter, Spirometry, etc.)



### Role/Technologies

H&S provides the client with a complete and certified medical class 2 A solution to manage in the round all needs and services supplied to patients taken into charge. In addition to the hardware technology platform and software technology platform, H&S offers a series of production and logistics services, such as Help Desk, 24-hour support and platform technical monitoring, aimed at ensuring the actual and perceived quality of end-to-end service for patients and professionals.





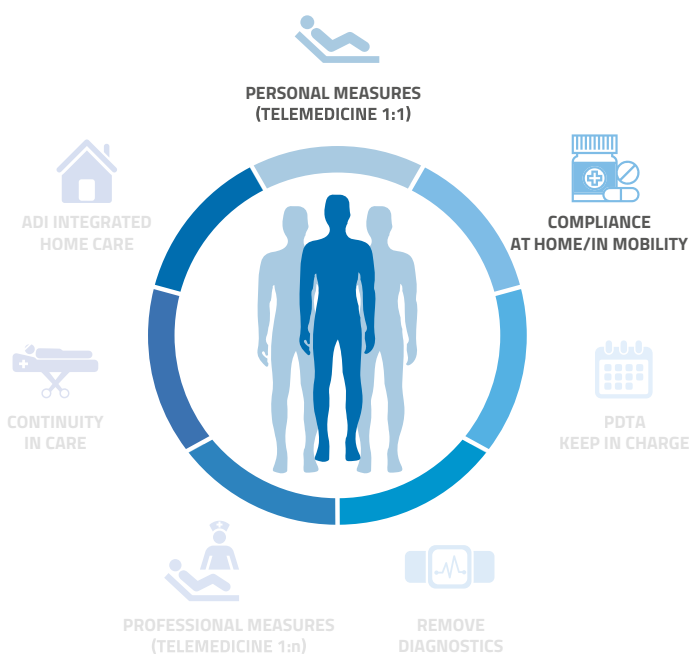


# Homecare Kit



## What it is

Family reality is essential in the management of the elderly and chronic patient. Environmental and personal safety, as well as therapeutic compliance, are the two basic challenges that any family with elderly people must cope with. The proposed solution makes it possible to meet the two basic needs: the elderly patient's safety at home and the patient's therapeutic compliance.



## This model uses

- Therapeutic compliance
- Personal and environmental safety

## Target patients

- Elderly patients
- Chronic patients
- Post-acute patients

## Target clients

- B2C patients

## Model description

The SAAS software solution and the enabling hardware technologies made available cover two essential aspects: Patient Safety and Therapeutic Compliance. The solution applies in particular to elderly chronic patients but can also be applied to post-acute and frail elderly patients in general.





## The Project

The idea is to provide a home hub able to assist the whole family and in particular the fragile subjects in terms of safety and therapeutic compliance. The hub collects signals from different devices through a local network and guarantees bidirectional communication between the patient and the caregiver.

Fall and environmental sensors allow you to perceive accidental falls and environmental problems (gas, flooding, smoke, CO2, etc.) while the Pill Dispenser helps and measures compliance with therapy.



Start Up



In Progress

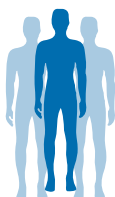


Validate



### Recipient

The service is intended for users who make personal use for their family or third parties who intend to offer such health care to end users



### Target patients

Elderly patients, chronic patients, post-acute patients



### What is monitored

Environmental and personal safety sensors, compliance assessment



### Role/Technologies

H&S provides the client with a complete and certified medical class 2 A solution to manage in the round all needs and services supplied to chronic and frail patients. In addition to the hardware and software technology platform, H&S offers Help Desk services, 24-hour support and technical monitoring of the platform and home devices aimed at ensuring the effective and perceived quality of the end-to-end service for the patient and his/her caregiver.

