

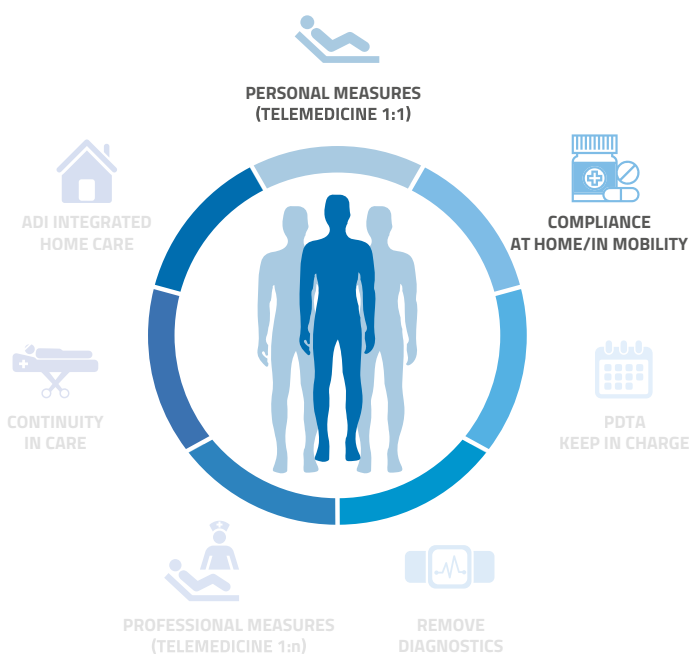


Homecare Kit



What it is

Family reality is essential in the management of the elderly and chronic patient. Environmental and personal safety, as well as therapeutic compliance, are the two basic challenges that any family with elderly people must cope with. The proposed solution makes it possible to meet the two basic needs: the elderly patient's safety at home and the patient's therapeutic compliance.



This model uses

- Therapeutic compliance
- Personal and environmental safety

Target patients

- Elderly patients
- Chronic patients
- Post-acute patients

Target clients

- B2C patients

Model description

The SAAS software solution and the enabling hardware technologies made available cover two essential aspects: Patient Safety and Therapeutic Compliance. The solution applies in particular to elderly chronic patients but can also be applied to post-acute and frail elderly patients in general.





The Project

The idea is to provide a home hub able to assist the whole family and in particular the fragile subjects in terms of safety and therapeutic compliance. The hub collects signals from different devices through a local network and guarantees bidirectional communication between the patient and the caregiver.

Fall and environmental sensors allow you to perceive accidental falls and environmental problems (gas, flooding, smoke, CO2, etc.) while the Pill Dispenser helps and measures compliance with therapy.



Start Up



In Progress

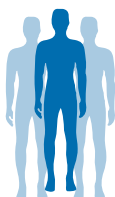


Validate



Recipient

The service is intended for users who make personal use for their family or third parties who intend to offer such health care to end users



Target patients

Elderly patients, chronic patients, post-acute patients



What is monitored

Environmental and personal safety sensors, compliance assessment



Role/Technologies

H&S provides the client with a complete and certified medical class 2 A solution to manage in the round all needs and services supplied to chronic and frail patients. In addition to the hardware and software technology platform, H&S offers Help Desk services, 24-hour support and technical monitoring of the platform and home devices aimed at ensuring the effective and perceived quality of the end-to-end service for the patient and his/her caregiver.



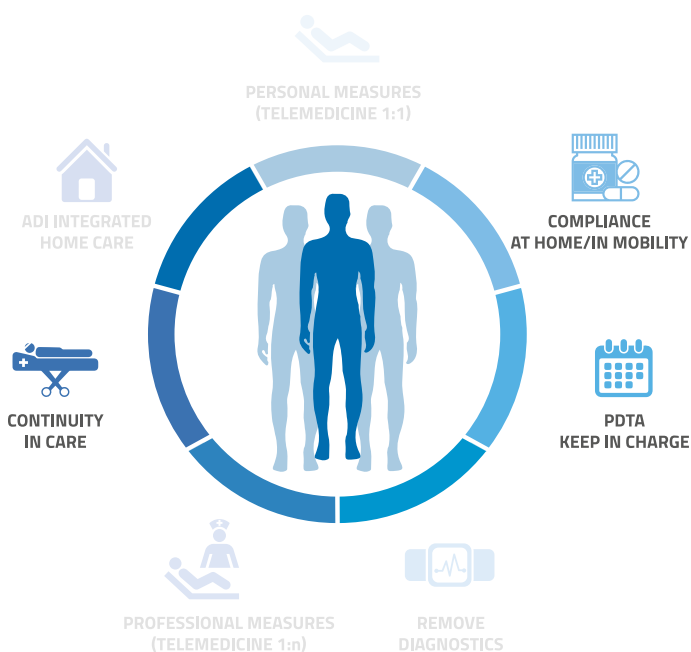
Hospital-territory continuity in care



What it is

Continuity of care consists in extending goals of care over time, without interruption through medical interventions at various levels and healthcare delivery domains.

It is a process thanks to which, after singling out the patient's needs, continuing healthcare is provided from a care level to another, be it a home, hospital or another facility setting.



This model uses

- 1:1 telemedicine
- 1:N telemedicine
- Therapeutic Compliance

Target patients

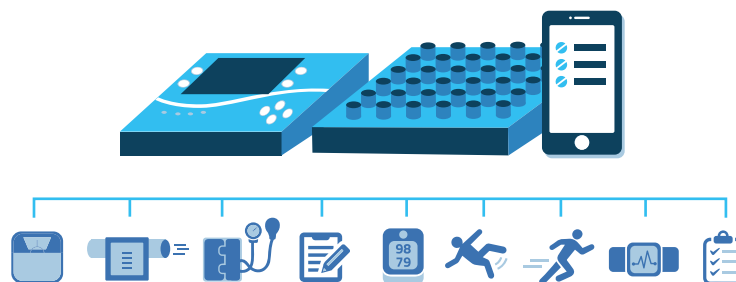
- Post-acute patients
- Post-surgery patients
- Severe patients

Target clients

- Hospitals
- Private clinics

Model description

The SAAS software solution and the enabling hardware technologies available cover three essential aspects: Patient Monitoring, Therapeutic Compliance and Patient Information. The solution applies to post-acute and/or severe patients in the hospital's charge and managed at home.





Use Case

- ✓ ASS 1 Trieste - Friuli Venezia Giulia
- ✓ Villa Maria Group
- ✓ Milan Multimedita Group
- ✓ **Fastweb for Bari Oncological Hospital**
- ✓ Xanwu Hospital Beijing - Cina

The Project

As part of the 5G experimentation, the Bari Oncological Hospital and Fastweb, as a mobile operator, have experimented 5G technology in serious cancer patients healthcare at their homes and a connected mobile laboratory. At the rate of 3 gigabits per second, we have integrated laboratory machine information, 4K videoconferencing and autonomous measures to facilitate patients and send them to the hospital if and only if necessary. Experimentation has now extended from a hospital setting to the patient's home and to mobility.



Start Up



In Progress

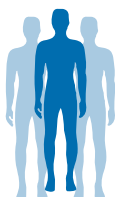


Validate



Recipient

John Paul II Scientific Institute for Cancer Research, Hospitalization and Health Care (IRCCS)



Target patients

Severe cancer patients being treated at the John Paul II Cancer Institute



What is monitored

Vital parameters and advanced laboratory testings for severe cancer patients



Role/Technologies

H&S provides the client with a complete and certified medical class 2 A solution for the complete need and service management supplied to the Bari Oncological Hospital patients. In addition to the hardware and software technology platform, H&S offers a series of production and logistics services, such as Help Desk, 24-hour support and platform technical monitoring, aimed at ensuring the actual and perceived quality of end-to-end service for patients and professionals.



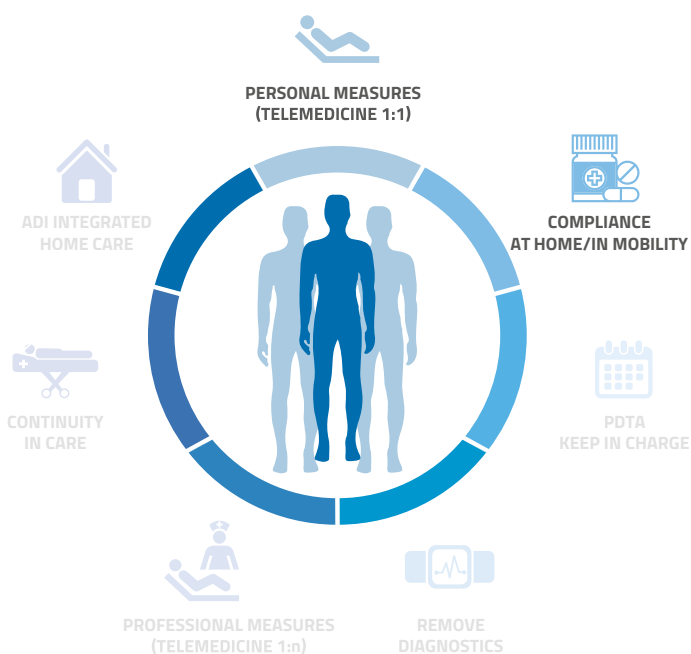


Value-added services for Health Insurances



What it is

Health insurances offer various services to their clients, ranging from telemonitoring to patient healthcare. H&S offers solutions and services for healthcare insurances, focused on 360-degree client management, providing an enabling and secure infrastructure to manage all patient-centred data, leaving clinical and medical decisions to the insurance company.



This model uses

- 1:1 (N) telemedicine
- Therapeutic Compliance

Target patients

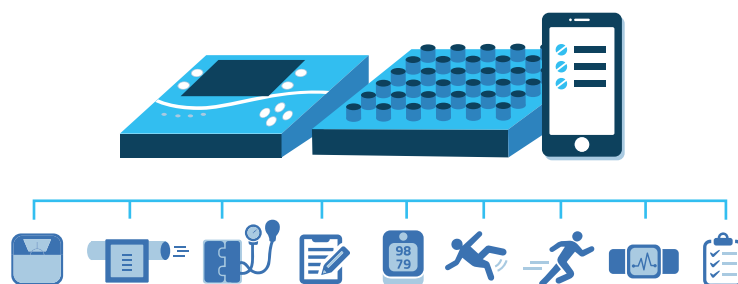
- Over-55 patients
- Chronic patients
- Post-acute patients

Target clients

- Insurance companies including a healthcare branch

Model description

The SAAS software solution and the enabling hardware technologies available cover three essential aspects: Patient Monitoring, Compliance and Patient Information. The solution applies to either home patients and mobile patients still in working age.





Use Case

- Unisalute - Unipol-Sai Group**
- Generali

The Project

Unisalute is a health insurance company that is part of the Unipol Sai group, which offers added-value services to its policyholders to take care of them at different levels of severity and management. Services include chronicity management, integrated home care services, telemonitoring and chronicity prevention.



Start Up



In Progress

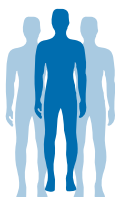


Validate



Recipient

Unisalute, the first health insurance in Italy concerning the number of managed clients



Target patients

Policyholders over 55 and IHCS patients to be monitored and taken into charge



What is monitored

Vital parameters, patient survey, IHCS access feedback, social health patients



Role/Technologies

H&S provides the client with a complete and certified medical class 2 A solution to manage in the round all needs and services supplied to Unisalute policyholders. In addition to the hardware and software technology platform, H&S offers a series of logistic production and services, such as Help Desk, 24-hour support and platform technical monitoring, aimed at ensuring the actual and perceived quality of end-to-end service for patients and professionals.

